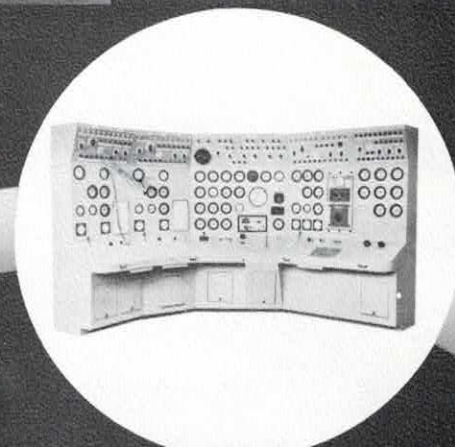


engineering

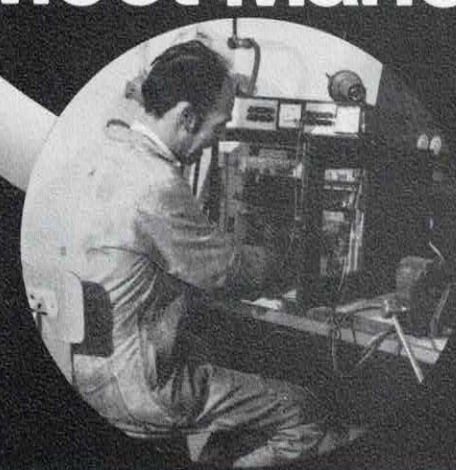


sales



workshop
assembly

Meet Manotherm



maintenance
and repairs

Meet Manotherm in practice

You'll meet people:

Knowing all about instruments; no matter whether they are pneumatic, electric, hydraulic or electronic.

Knowing all about the application, supplies, maintenance and repairs.

Knowing how to do the job; quick and efficient, in any port, all over the world.

Meet Manotherm in practice, you'll meet skill and profession.



Meet Mamotherm.

Meet a day and night service,
everywhere.

Backed up by:

A team of 180 enthusiastic, skilled
workers.

A large number of qualified, factory
trained engineers.

Many years of practice and experience.

A large stock of products and spare
parts of many types of instruments
for marine and industrial application.

Meet us in our workshop and on board,
in the center of the petro-chemical
industry, close to europoort,
world's largest port
and be welcome.

Mamotherm



Products of "taylor-made" instruments

Besides the production of pressure gauges, mercury-in-steel pyrometers and glass thermometers, Manotherm is following the tendency of new developments and has created a new production line for electronic instruments for temperature, pressure and level measurement. The principle is the print card with integrated circuits which are made according to the highest standards of reliability.

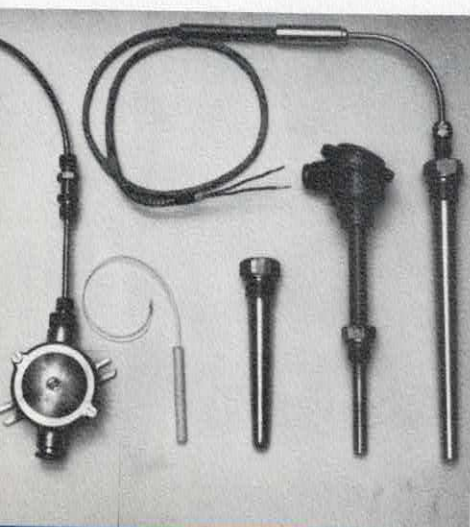
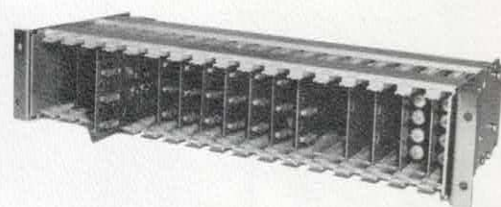
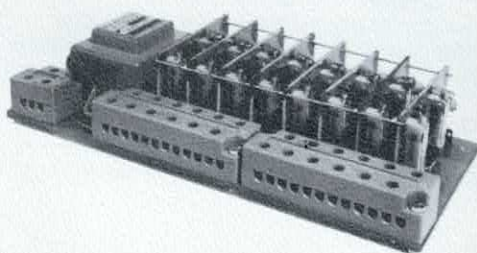
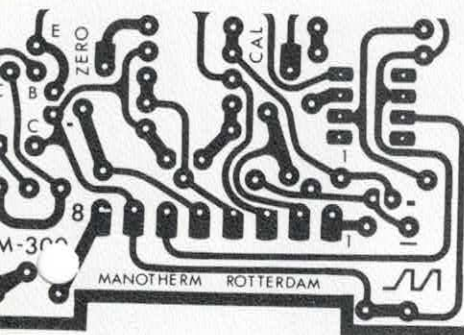
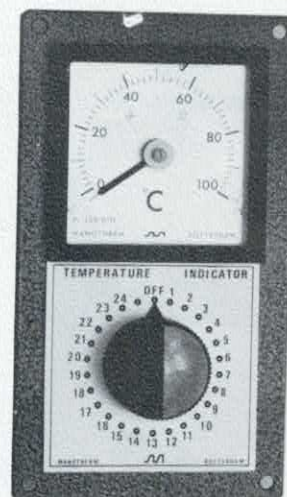
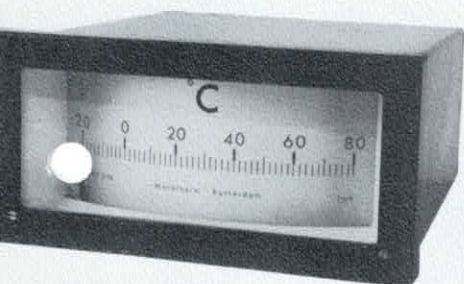
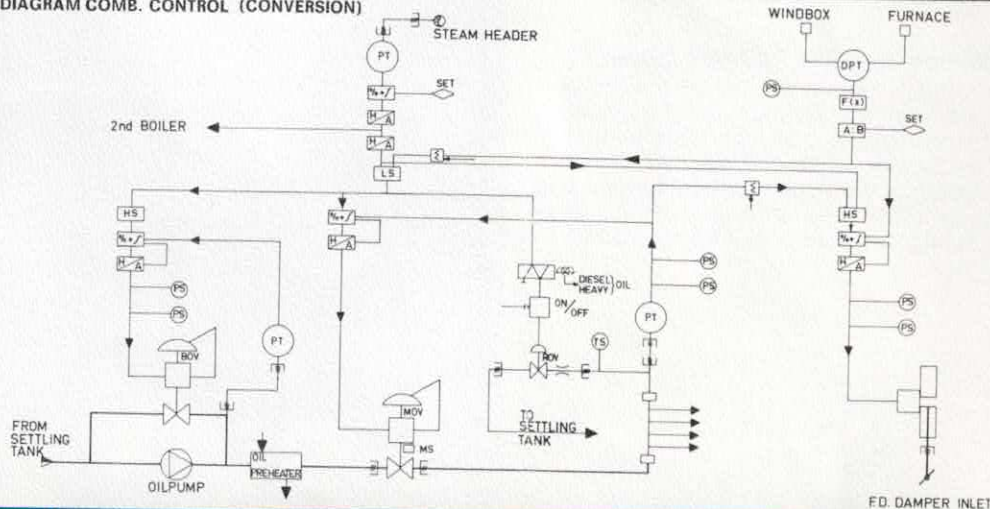
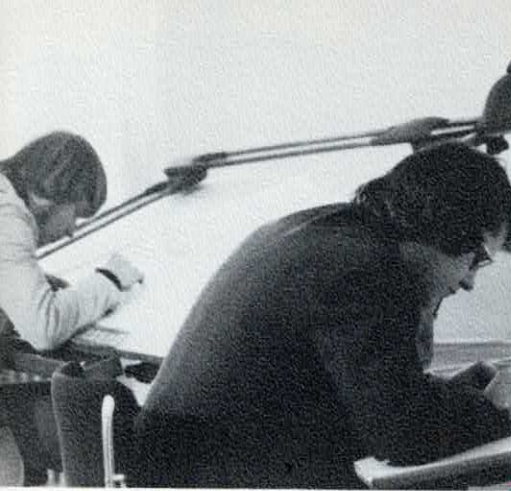


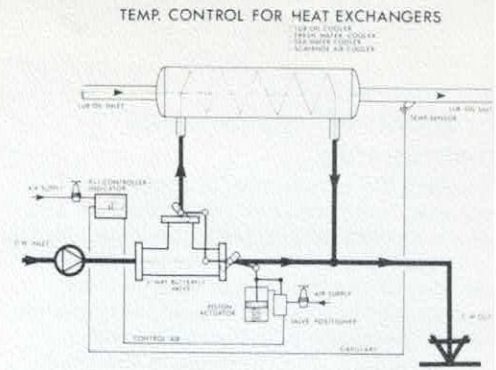
DIAGRAM COMB. CONTROL (CONVERSION)



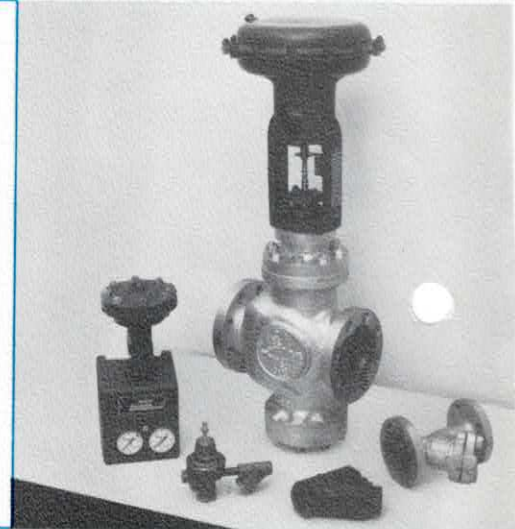


Engineering

Knowledge of engineering and many years of experience enable Manotherm to recognize the customer's problem. Our engineering department is available to engineer the control loops for pressure, temperature and level in your process system, in a plant or on board and to advise in the application of the proper equipment and instruments, conversion of existing vessels to centralized control and automating a ship's plant (diesel and steam) in accordance with classification requirements.

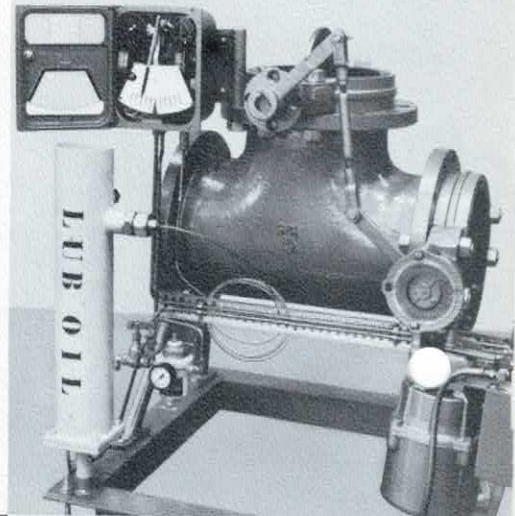


A large and well-balanced stock of spare parts and/or complete units is available for immediate supply of many different makes.



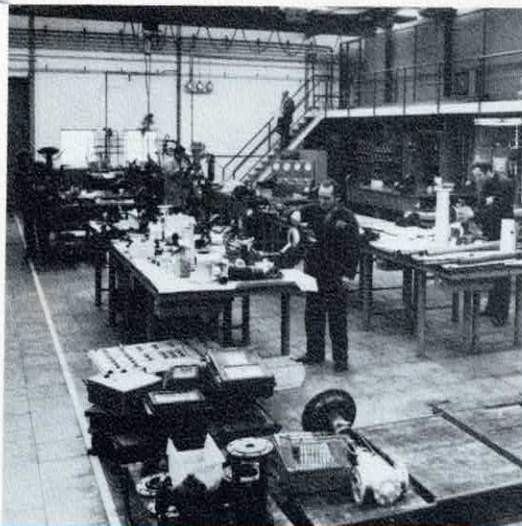
Manotherm works daily all around the clock

Manotherm works where she is needed. Rotterdam, the native town of our company, of course is taking the first place. But also Amsterdam, Antwerp, Hamburg, Bremen, Le Havre, Lisbon, Genoa, Piraeus, Stavanger and Gothenburg are places where our engineers feel like at home. A round the clock service, also during the weekends, is at your disposal.



Where are the repairs done?

If a repair cannot be carried out on the spot, Manotherm engineers disconnect the instruments and take them to our new factory, where we dispose of modern and efficient test equipment and repair tools in order to guarantee a good working unit, which can be refitted on board.



When do we repair?

An instrument will be repaired when the repaired value is up till 50% of the replacement value. When the cost of repair will exceed this 50%, we will generally contact our customer first.



Meet Mamotherm in

the engineering for control loops and the application of controls and instruments.

Meet Mamotherm in

supply of any type of control and instrument; with all spare parts ready in stock.

Meet Mamotherm in

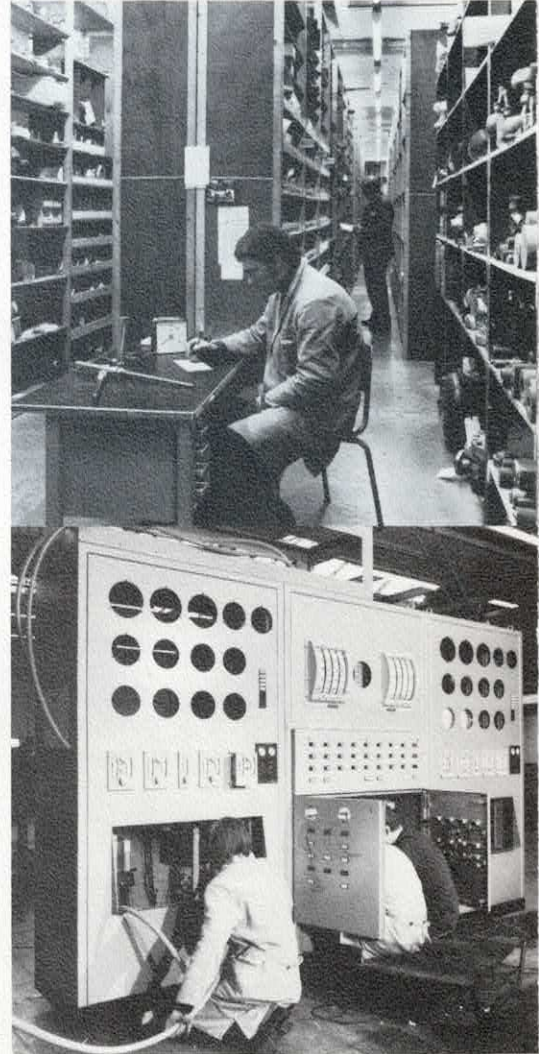
workshop assembly, installation, commissioning and after sales service on board, in the field, everywhere at any time.

Meet Mamotherm in

maintenance and repairs in her workshop or in the field or on board, day and night, anywhere.

Knowledge is essential

It is essential that a Company which has such a wide variety of products to handle, can dispose of a staff of engineers. Mamotherm has a large staff of, mostly factory-trained, engineers with many years of practice.



Mamotherm repairs

In general all instruments, no matter whether they are hydraulic, pneumatic, electric or electronic: tachometers, mechanic or electric. Mercury in steel pyrometers. Electric pyrometers, salinometers, pressure gauges, pneumatic- and hydraulic valves. But also pressure- and level pilots, valve positioners. Mercury filled pneumaticators, hydrostatic tank contents gauges, combustion controls and its components. Remote level glasses for boilers, burner equipment. Viscosity installations, bridge controls, dataloggers etc.



Manotherm-Rotterdam supplies and repairs:

all kinds of measuring instruments and control equipment

Mounting and adjustment on board of:

automatic combustion control panels, feedwater control equipment, control valves, salinometers, boiler remote level glasses, etc.

Agents for:

ASHCROFT - pressure- and temperature instruments, pneum.pressure switches

BAILEY METERS & CONTROLS - electronic- and pneumatic systems

COPEES-VULCAN - feedwater controllers, sootblowers, desuperheaters

DEBRO - pneumatic instruments for the process industry

ELEKTROMEKANO - salinometers

FINN TVETEN - HAY trim indicators

HELWEG MIKKELSEN & CO - remote temperature equipment

INGERSOLL-RAND - compressors, air dryers, pneumatic tools and hoists

LESLIE CO - pneumatic control valves, reducing valves, pilots

MINGORI - hydraulic pipe.benders - hydraulic jacks

RICHARDSONS WESTGARTH - bridge control equipment - dataloggers

SCHNEIDER-thermometers

SPERNAGEL - transportable boring gear equipment

THRIGE-NAKSKOV - hydraulic operated valves

VAREC - tank contents gauges

V.D.O. - pressure gauges

YARWAY - distance boiler level glasses, steam traps

Suppliers for:

NEGRETTI & ZAMBRA - and other make mercury-in-steel diesel pyrometers

After sales service for:

NAKAKITA - control equipment

Repairs and maintenance for:

ASKANIA - viscosity installations

GENERAL REGULATOR and HAGAN combustion control panels

KÄLLE - viscosity installations

Manotherm nv Rotterdam

Factory and offices:

Welplaathoek 20 (Botlek)

P.O. Box 1218 Rotterdam

Phone: 010 - 16 90 11, after 6 p.m. 010 - 20 03 98/-01886 - 34 63/-01884 - 21 34

Telex: 23454 termo nl

